

# Marathon Center for the Performing Arts

## Their story, from concept to present time



The building that would become the Marathon Center for the Performing Arts (MCPA) was a community and cultural center in Findlay long before the idea of a downtown performing arts center was ever conceived.

Originally Findlay High School, the building was constructed in 1925 on the historic site of the first Findlay field office for the Ohio Oil Company, which would grow into the international company better known today as Marathon Petroleum Corporation.

Fifteen years later, an art deco style auditorium was added to the school, and for the next 23 years, the theater was home to student productions, ceremonies and assemblies. In 1963, the building became Central Middle School. Central, as it was affectionately known, hosted productions by the Findlay Light Opera Company, touring shows presented by The Arts Partnership, the annual high school musical and much more.

In 2012, Findlay City Schools built two new junior high schools. Central Middle School closed its doors just a year later, in January 2013. The building was slated for demolition until a group of citizens organized themselves around the mission to "Save Central." By April of that same year, the Hancock County Per-

forming Arts Center was formed, and its board of directors quickly mobilized the community.

Using the beloved auditorium as a structural and aesthetic foundation, renovations included new theater seats, expanded backstage capabilities and state-of-the-art technology, along with the addition of a stunning atrium lobby, lounge, visual art gallery, suite of dressing rooms and several flexible spaces to be used for classes and meetings.

Today, MCPA hosts over 300 events each year including performances by rock-n-roll legends Chicago and country music superstar Darius Rucker, as well as weddings and pre-school graduation ceremonies.

The growth of MCPA's programming and endowment fund ensures that the long history of this community performing arts center is just the beginning!

Last year was challenging for most of the world, and the performing arts industry got hit particularly hard. In March 2020 Marathon Center for the Performing Arts was forced to close its doors because of the pandemic. This "temporary closure" resulted in hundreds

*Continued on Page 2*

### OHIO LOGISTICS Warehousing & Transportation

Findlay, OH 45840	(419) 425-4906
<b>Four Locations</b>	
Fostoria, OH 44830	(419) 436-8210
<b>Three Locations</b>	
Northwood, OH 43619	(419) 425-4906
Ottawa, OH 45875	(419) 523-3722
Willard, OH 44890	(419) 425-4906
Columbus, OH 43228	(614) 876-8611
Bellevue, OH 44811	(419) 379-1046
Bowling Green, OH 43402	(419) 326-5513
Trenton, OH 45067	(513) 714-3420
Joliet, IL 60431	(419) 425-4906

### OHIO LOGISTICS Southern Tier Division

Painted Post, NY 14870	(607) 936-9414
<b>Four Locations</b>	

### OHIO LOGISTICS Penn Centre Division

State College, PA 16804	(814) 357-6880
Bellefonte, PA 16823	(814) 357-6880

### OHIO LOGISTICS Northern Georgia Division

Rock Spring, GA 30739	(706) 764-1045
<b>Two Locations</b>	

### OHIO LOGISTICS Olive Branch Division

Olive Branch, MS 38654	(662) 219-2977
------------------------	----------------

### DOCUMENT SERVICE COMPANY

Findlay, OH 45839	(419) 422-3330
-------------------	----------------

### Interesting Ohio History

*Burgess Meredith of Cleveland, OH was an American actor and filmmaker, whose career encompassed theater, film, and television. Active for more than six decades, Meredith has been called "a virtuosic actor" and "one of the most accomplished actors of the 20th century." Meredith was known later in his career for his appearances on The Twilight Zone and for portraying the Penguin in the 1960s TV series Batman, and boxing trainer Mickey Goldmill in the Rocky film series.*

### GYST November Winner:

**Ottawa, OH**

### In this issue:

Center for the Performing Arts	1
Ohio Logistics Christmas	2
Tech Talk	3
Meet Rachel Irwin	4

**www.OhioLogistics.com**



*Continued from Page 1*

of cancelled events and months of an empty venue.

But arts organizations are nothing if not creative. The board and staff of MCPA found ways to stay involved in the community and provide arts experiences in unique ways.

During the summer months MCPA hosted "drive in concerts" featuring some of Findlay's favorite local bands. Summer camps went remote with arts educations streaming activities directly into camper's homes. Digital shows by folk artists and family-friendly theater troupes were offered at no charge. And MCPA turned into Hancock County's social-distancing friendly courthouse, hosting grand jury deliberations and trials for over a year.

"We could not afford this alternative programming without the support of our loyal donors and sponsors," said Heather Clow, MCPA's Executive Director. "And Ohio Logistics was particularly generous."

"Ohio Logistics has been MCPA's season sponsor from the very beginning, but we didn't

feel it was right to ask for that level of support when the stage was literally empty. I was stunned when Chuck Bills continued his sponsorship at the full amount." She continued, "That gesture is a real testament to the company's commitment to creating a strong community and their recognition of the role the arts play in our lives."

Happily, the lights are back on at MCPA. Events returned full force this fall and the building is bustling again.

The 2021-2022 season (still generously sponsored by Ohio Logistics) features holiday shows, country music, comedy, family shows, rock shows and so much more. Youth theatre productions, featuring school kids from around the county both on and off stage, have returned along with the SPARK series of school day matinees. And Boogie, MCPA's annual street party, returned in June.

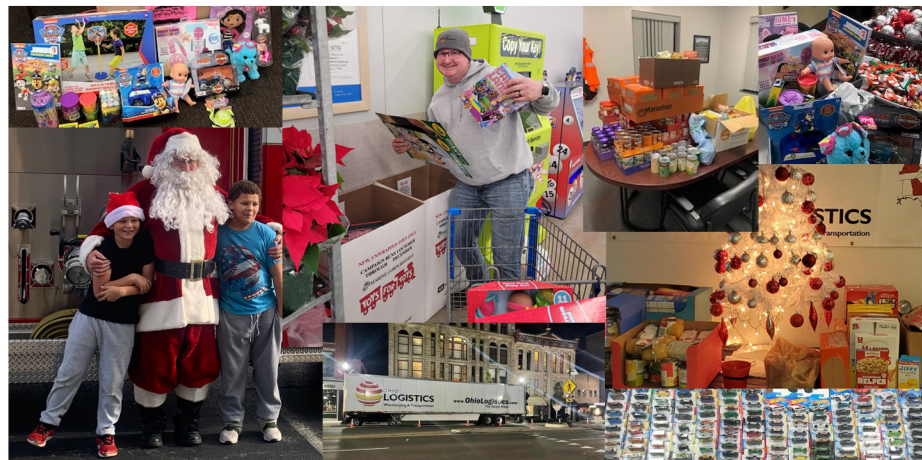
"MCPA is the community's performing arts center," Heather concluded. "Words can't express how excited we are to welcome everyone back."

## Ohio Logistics Associates Give Back Providing for those in need this Christmas season

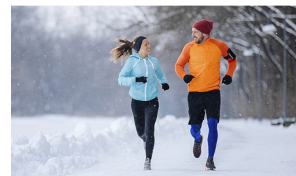
Associates from all Divisions of Ohio Logistics lived up to our long-held tradition of giving back during this past Christmas season. We participated in food drives for local City Missions, provided for adopted families, contributed to food banks, supplied an abundance of toy for the Toys for Tots program, and do-

nated to the Humane Society. This giving attitude of our Associates helped provide for those in need, all while building strong communities in which we work and live.

To all of our Associates, we thank you for your generosity!



## Take Good Care of Yourself



Below are some tips to stay safe and healthy while you enjoy your cold-weather workouts.

**Wear layers.** Dress in clothing that you can easily take off and put back on as needed. Start with a thin layer of synthetic material, such as polypropylene, which draws sweat away from your body. A layer of fleece or wool can be added for insulation (don't wear cotton, as it absorbs sweat and can make you colder). Top this off with a waterproof, breathable outer layer.

**Protect** your head, hands, and feet. When it's cold, blood flow concentrates in your body's core to help keep you warm, which leaves your head, hands, and feet vulnerable to the cold. Wear gloves lined with wool or fleece, or add a thin pair of glove liners made of a wicking material under a pair of heavier gloves. Also, wear heavy socks and a wool cap, and protect your eyes from wind and glare with dark glasses.

**Apply sunscreen.** It may not feel hot, but you can still get sunburned in winter. Your risk increases if you are surrounded by snow, which can reflect sunlight.

**Stay hydrated.** You are more likely to get dehydrated in cold weather because cold air tamps down thirst. While you may not need the same fluid intake as during summer, you still need to maintain the same approach to hydration.

**Choose a safe surface.** Make sure your route offers good footing and is clear and safe to navigate.





## Tech Talk

By Ohio Logistics' IT Manager, Mike Spradlin

"Happy New Year" from IT!

Welcome back to "Tech Talk," your inside source for all things IT. As we usher in the new year, it is more important than ever to be "cyber aware." One of our best tools against cyber-attacks is education. IT wants to ensure all associates are properly trained to help identify and respond to potential threats. Starting very soon we will be revamping our cyber training platform to include expanded content, more sophisticated phishing attacks and compliance tracking. Our intent is to provide you with the tools and training you need to be cyber vigilant and protect yourself, and the organization against cyber-attacks.



**Did you know?** Instead of deleting a single letter, pressing Ctrl + Backspace will delete the entire word behind the cursor. This makes deleting text much quicker and easier.

**Fact:** Last month Ohio Logistics was targeted 105 times with malicious phishing attacks. Zero were successful.

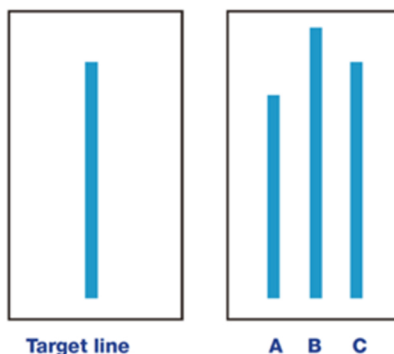
## Interesting Information

Psychologist, Solomon Asch, conducted an experiment in 1951 to investigate the extent to which social pressure from a majority group could affect a person to conform.

He used a lab experiment with 50 college students and told them that they were participating in a vision test. Using a line judgment task, he put the participant with seven other students who were part of the experiment. The seven students agreed in advanced what

their answer would be when presented with the line task. The participant thought that they were all participating in the experiment.

The experimenter stood in the front of the room and held up a display with one comparison line and the students were told to choose the line (out of three) that was the same length. Each person in the room would state their answer line (A, B, or C) out loud. The real participant was seated at the end of the row and would give their answer last.



*The correct answer is obviously "A," right?*

There were 18 trials in total and the seven students who were in on the experiment purposely gave the wrong answer 12 times. The point of the experiment was to see if the real participant would give the right answer or if they would conform to the majority.

On average, about 1/3 of the participants who were placed in this situation went along and conformed with the clearly incorrect majority.

Throughout 12 trials, about 3/4 of participants conformed at least once and 1/4 of participants never conformed. In the control group where there was no pressure from other students who were part of the experiment, less than 1% of participants gave the wrong answer.

When participants were interviewed after the experiment, most of them said that they did not believe their conforming answers, but they went along with the group out of fear of being ridiculed.

The experiment concluded that people conform for two main reasons: they want to fit in with the group (normative influence) and because they believe the group is more informed than they are (informational influence).

### Test Your Logistics IQ:

1) A contingency plan for sustained operations during periods of high risk, such as labor unrest or natural disaster. CSCMP provides suggestions for helping companies do continuity planning in their *Securing the Supply Chain* research.



2) A test the ICC uses to determine if a trucking operation is bona fide private transportation; the private trucking operation must be incidental to and in the furtherance of the firm's primary business.



3) Traditionally, all manufacturing costs, other than direct labor and direct materials, that continue even if products are not produced. Although fixed overhead is necessary to produce the product, it cannot be directly traced to the final product.



### January Dates of Importance:

January 1 - New Year's Day  
Paul Revere Born, 1735  
January 9 - Law Enforcement Appreciation Day  
First iPhone, 2007  
January 15 - First Superbowl, 1967  
January 16 - Prohibition Began, 1920  
January 17 - MLK Jr. Day  
January 29 - Baseball Hall of Fame Established, 1936

Answers to "Test Your Logistics IQ"  
3. Fixed Overhead  
2. Primary-Business Test  
1. Business Continuity Plan (BCP)

### We are members of:

IWLA  
NAFTZ  
OTA  
ATA  
CBICC  
Grant County Chamber  
Putnam County Chamber/Econ. Dev.  
Fostoria Chamber/Econ. Dev.  
Wood County Chamber  
Fulton County Chamber  
Findlay Hancock County Alliance  
Bellevue Chamber of Commerce  
Chemung County Chamber  
Walker Cnty Chamber of Commerce

[www.OhioLogistics.com](http://www.OhioLogistics.com)



**OHIO  
LOGISTICS**  
Warehousing & Transportation

## Meet Rachel Irwin

Rachel is a two-year Associate and Customer Service Representative in our Penn Centre Division. She was kind enough to quickly answer our questions all the way from the beautiful state of Pennsylvania. Read below to learn more about Rachel.



OL: Tell us about your family.

Rachel: My husband and I have two sons we are very proud of. We are fortunate for the large family that we have. I am very close with my mother and brothers. We all live local and enjoy one another's company on a regular basis.

OL: How do you like to spend your time outside of work?

Rachel: I spend a lot of time cooking and baking, and my husband and I belong to several organizations that we are highly involved in.

OL: Tell us about your best vacation.

Rachel: My best vacations would be the ones to Fort Myers, Florida. My father-in-law was from there and on these trips we would get to spend time with him.

OL: Which local hole-in-the-wall restaurant would you recommend to someone visiting from out of town? What should they order?

Rachel: Miller's Hoagies, order your favorite flavor hoagie. It's the only place you get upside down subs that are truly unique.

OL: Tell us about your favorite destination within two hours of home.

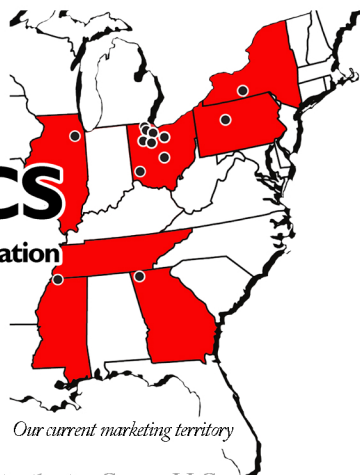
Rachel: There is a road trip north of here my husband and I enjoy a great deal. We spend a night or two in St Mary's, Pennsylvania and road trip back. There are so many beautiful things to see and do.

OL: Tell us something about yourself that most people don't know.

Rachel: I live and love with my whole heart, so if you are one of my people I will walk beside you through anything.



**OHIO  
LOGISTICS**  
Warehousing & Transportation



*Our current marketing territory*

Please contact us at:

**(419) 425-4906**

or [sales@OhioLogistics.com](mailto:sales@OhioLogistics.com)

P.O. Box 952 1800 Industrial Drive Findlay, OH 45839-0952

Ohio Logistics is a division of Findlay's Tall Timbers Distribution Center, LLC



*"It's a wise man who understands that every day is a new beginning, because boy, how many mistakes do you make in a day? I don't know about you, but I make plenty. You can't turn the clock back, so you have to look ahead."*

- Mel Gibson -

### Happy Birthday To You!

#### OL Ohio

Kevin Anderson 1/12  
Anthony Barton 1/7  
Wayne Conley 1/11  
Andrew Costley 1/3  
Jason Daniels 1/23  
Randy Dorman 1/20  
Ashley Fritz 1/25  
Charles Hackworth 1/25  
Ben Harris 1/17  
Brian Howell 1/26  
Michael Kupper 1/28  
Nicole Marvin 1/19  
Tom Orwick 1/28  
Kristen Price 1/8  
Roman Risner 1/8  
Marci Stahl 1/29  
Thomas Thompson 1/10  
Karen Victory 1/17  
Norm Wheeler 1/13

#### OL Southern Tier Div.

William Brimmer 1/6  
Frank Caparulo 1/6  
Tyler Cook 1/15  
Jason Ducot 1/14  
Thomas Dukes 1/17  
Eric Freeland 1/3  
Mathew Gleason 1/12  
Mahlon Hall 1/29  
Ricky Hersh 1/12  
Eugene Keeney 1/4  
Rory Poole 1/31  
Shane VonRapacki 1/9  
Robert Watkins 1/13

#### OL Penn Centre Div.

David Anderson 1/15  
Todd Bennett 1/26  
Robert Christy 1/11  
Tami June 1/29

### It's Your Anniversary!

#### OL Ohio

Dan Blanchard 11 Years  
Lisa Blanton 1 Year  
Randy Buckmaster 15 Years  
Brian Corbin 1 Year  
Deb Dick 11 Years  
Ashley Fritz 4 Years  
Derek Guilliod 3 Years  
Norm Hinkle 14 Years  
Sophia Holguin 1 Year  
JoLynn Long 16 Years  
Jeff Montague 19 Years  
Pam Orwick 14 Years  
Kirby Richardson 2 Years  
Phil Roberts 8 Years  
Dakota Rose 2 Years  
Mik Schirtzinger 8 Years  
Eric Smith 4 Years  
Jerrod Steffensen 9 Years  
Liz Witt 6 Years  
Jason Young 18 Years

#### OL Southern Tier Div.

Chad Burton 5 Years  
Debra Durgin 1 Year  
Steven Forman 1 Year  
Gary Hankinson 11 Years  
Dennis Johnson 15 Years  
Eugene Keeney 11 Years  
Mark Meinen 15 Years  
Bob Moon 15 Years  
Casey Neal 5 Years

#### OL Penn Centre Div.

Bryce Hanley 1 Year  
Rachel Irwin 2 Years

#### OL Olive Branch Div.

Jasmine Claiborne 1 Year  
Rita Williams 3 Years